

twilight

INSTRUMENTOS DE MEDICIÓN INDUSTRIAL

Ficha Técnica

Sonda DPM Con

Sensor IR

DF-PRBDPMIR

www.twilight.mx

 / [twightsadecv](#)

 / [twightsadecv](#)

 / [twightsadecv](#)

twilight

INSTRUMENTOS DE MEDICIÓN INDUSTRIAL



LLÁMANOS

+52(81) 8115-1400 / +52 (81) 8173-4300

**LADA Sin Costo:
01 800 087 43 75**

**E-mail:
ventas@twilight.mx**

www.twilight.mx

PosiTector[®] *DPM*

Dew Point Meter



Measures and records climatic conditions including: Relative humidity, air temperature, surface temperature, dew point temperature and difference between surface and dew point temperatures. Ideal for surface preparation as required by ISO 8502-4.



Select from 5 probe models



Available on the
App Store



PosiTector[®]
SmartLink™
Compatible

D A T A S E T *

MEASURES

RH – relative humidity
Ta – air temperature
Ts – surface temperature
v – wind velocity

CALCULATES

Td – dew point temperature
Ts-Td – the difference between surface and dew point temperatures
Tw – wet bulb

* Dependent on model

DeFelsko[®]
The Measure of Quality

PosiTector®*DPM* Dew Point Meter

All Gages Feature...

Simple

- All readings are constantly updated and displayed simultaneously
- No need to consult complex tables or use a slide rule calculator
- Alarms indicate when climate conditions are unsuitable for painting

Durable

- Solvent, acid, oil, water and dust resistant—weatherproof
- Shock-absorbing, protective rubber holster with belt clip
- Two year warranty on body AND probe

Accurate

- Fast response precision sensors provide accurate, repeatable readings
- Smart Trend™ indicators identify rising, falling or stable readings
- Certificate of Calibration showing traceability to NIST included
- Conforms to national and international standards including ISO and ASTM

Versatile

- PosiTector body accepts all PosiTector DPM, 6000, 200, RTR, SPG, SST, SHD, BHI and UTG probes easily converting from a dew point meter to a coating thickness gage, surface profile gage, soluble salt tester, hardness tester or ultrasonic wall thickness gage
- Auto Log mode records environmental parameters at user selected time intervals
- High contrast LCD with backlit display
- Flip Display enables right-side-up viewing
- Uses alkaline or rechargeable batteries (built-in charger)

Powerful

- Every stored measurement is date and time stamped
- Screen Capture—save screen images for record keeping and review
- Sealed USB port for fast, simple connection to a PC and to supply continuous power. USB cable included.
- PosiSoft USB Drive—stored readings and graphs can be accessed using universal PC/Mac web browsers or file explorers. No software required.
- Includes PosiSoft suite of solutions for analyzing and reporting data

Standard Models

Includes ALL features as shown on left plus...

- Storage of 2,500 datasets
- Auto Log mode runs unattended on batteries for up to 50 hours or continuously via USB

Advanced Models

Includes ALL features as shown on left plus...

- Storage of 100,000 datasets in up to 1,000 batches
- **NEW** Enhanced Auto Log mode powers the gage off between readings for up to 8 months of battery life. Each reading can be uploaded to PosiSoft.net or an FTP server using WiFi. Automatically group readings into batches at daily, weekly, or monthly intervals
- User defined alarms for all parameters—visible and audible warnings. **NEW** Receive email alerts when connected to WiFi
- **Bluetooth** Technology for data transfer to a mobile device running the PosiTector App or optional portable printer
- Onscreen Batch Annotation—add notes, change batch names and more with built-in QWERTY keyboard
- Store thickness, profile, environmental and wall thickness measurements in individual batches
- Wet bulb temperature can be displayed and recorded
- Trend Charts graph readings in real-time

PosiTector SmartLink™ Compatible

- Wirelessly connect PosiTector DPM and DPMS probes to your smart device
- Turns your cell phone or tablet into a virtual PosiTector gage
- Includes Free mobile app



For a complete comparison visit www.defelsko.com/dpm

Remote Monitoring with Auto Log Mode

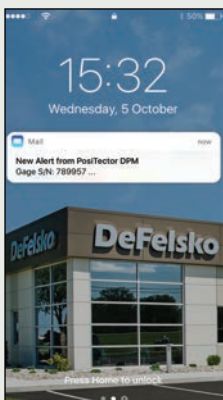
In addition to its capability as a handheld instrument, the PosiTector DPM Advanced model's innovative Auto Log feature can be used to . . .

- Monitor and record climatic conditions at user-selected intervals. Advanced models allow you to create new batches at daily, weekly or monthly intervals.
 - Upload readings to the cloud-based PosiSoft.net website after each measurement*
 - Receive email alerts when readings exceed pre-defined parameters*
 - Upload readings to an FTP server for integration with third party software*
 - View environmental readings from one or more gages in remote locations from PosiSoft Desktop software or web-based PosiSoft.net
- * requires an internet connection

Access your data from any web-connected device.



PosiSoft Desktop software includes the PosiTector DPM Monitor feature for continuous charting of readings from one or more dew point meters. PosiTector DPM Monitor refreshes data from PosiSoft.net once every minute.



Receive email alerts when readings exceed pre-defined parameters

ALARM SETUP		
Field	≥	Value
%RH:	≥	85.0
Ta:	≥	1.0
Ts:	≥	1.0
Td:	≥	1.0
Ts-Td:	≥	3.0
Alarm:	<input checked="" type="checkbox"/>	Sound: <input type="checkbox"/>

email Setup
OK Cancel

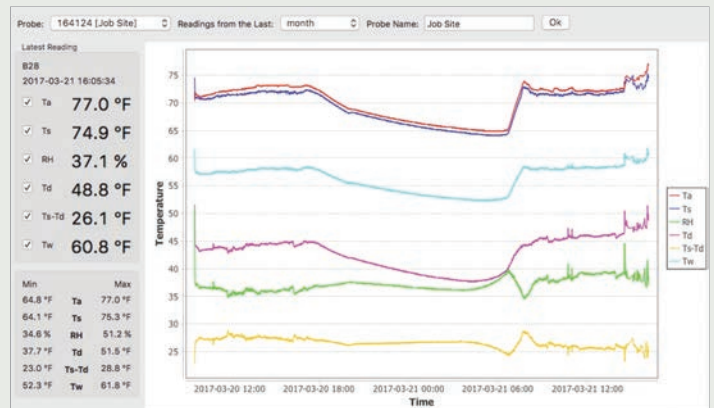
email Setup
Enabled






When enabled, alarm alerts will be sent to the email address below.

email address:
alarm@defelsko.com

Test email

OK Cancel



					
Probe Description	Integral Probe with Direct Contact Surface Temperature Sensor	Integral Probe with Infrared Surface Temperature Sensor	Integral Probe with K-type Cabled Surface Temperature Sensor	Integral Probe with Wind Speed Sensor	Cabled Probe with 1/2" NPT Threads
Measured/Calculated Parameters	Surface Temperature Air Temperature Wet Bulb Temperature* Relative Humidity Dew Point Temperature Surface Temperature minus Dew Point Temperature	Surface Temperature Air Temperature Wet Bulb Temperature* Relative Humidity Dew Point Temperature Surface Temperature minus Dew Point Temperature	Surface Temperature Air Temperature Wet Bulb Temperature* Relative Humidity Dew Point Temperature Surface Temperature minus Dew Point Temperature	Surface Temperature Air Temperature Wet Bulb Temperature* Relative Humidity Dew Point Temperature Surface Temperature minus Dew Point Temperature Wind Speed	Air Temperature Relative Humidity Dew Point Temperature
Order Guide					
Standard Body and Probe	DPM1	DPMIR1	DPMS1	DPMA1	DPMD1
Advanced Body and Probe	DPM3	DPMIR3	DPMS3	DPMA3	DPMD3
Probe only	PRBDPM	PRBDPMIR	PRBDPMS	PRBDPMA	PRBDPMD

*Wet Bulb Temperature displayed/recorded on PosiTector Advanced (3) models only

ALL GAGES COME COMPLETE with environmental sensors, protective rubber holster with belt clip, wrist strap, 3 AAA batteries, instructions, nylon carrying case with shoulder strap (DPM/DPMA/DPMD), hard shell carrying case (DPMS), protective lens shield, Long Form Certificate of Calibration traceable to NIST, USB cable, two year warranty.

SIZE: 159 x 61 x 31 mm
(6.25" x 2.4" x 1.2")

WEIGHT: 150 g (5.3 oz.)
without batteries

Conforms to ISO 8502-4,
BS 7079-B4, ASTM D3276,
IMO PSPC, SSPC-PA7 and
US Navy NSI 009-32.



Hot-wire anemometer with your choice of wind speed measurement units — m/s, km/h, mph, ft/s, ft/m, knots. DPM A models only.



Flip Display enables right-side-up viewing in any position. PosiTector DPM A shown.



PosiTector DPM D probe includes 1/2" NPT threads for insertion into pipes.



PosiTector DPM IR probe includes infrared surface temperature sensor.



Analyze Readings using a web browser from anywhere – jobsite or head office.

Rugged Features...

Sealed USB Port
for communicating
with a PC or Mac

Water and dust
resistant



High contrast color
LCD with backlit display

Scratch/solvent/impact
resistant lens

Multi-function
navigation button

Solvent, acid, oil
resistant, high grade,
industrial strength
housing

Integral Probe
shown

Air temperature and
humidity sensor

Built-in thermocouple or infrared
surface temperature sensor



Specifications	Range	Accuracy	Resolution
Surface Temperature	-40° to 80° C	± 0.5° C	0.1° C
	80° to 190° C	± 1.5° C	
	-40° to 175° F	± 1° F	0.1° F
	175° to 375° F	± 3° F	
Infrared Surface Temperature*	-70° to 380° C	± 1° C + 1%**	0.1° C
	-94° to 716° F		0.1° F
Air Temperature	-40° to 80° C	± 0.5° C	0.1° C
	-40° to 175° F	± 1° F	0.1° F
Humidity	0 to 100%	± 3%	0.1%
Wind Speed†	0 to 20 m/s	± 3% Full Scale + least significant digit	0.1 m/s
	0 to 44 mph		0.1 mph
Dew Point	-60° to 80° C	± 3° C‡	0.1° C
	-76° to 175° F	± 5.4° F‡	0.1° F

* DPM IR models only

** At 23° C ambient

† DPM A models only

‡ dependent on RH. See www.defelsko.com/TdAccuracy for more information.

PosiTector DPM IR Specifications	
Distance to Spot Ratio (D:S)	4:1
Emissivity	Adjustable
Response Time	<500 ms (95% response)

Options

PosiTector Probes

PosiTector bodies accept all PosiTector probes easily converting from a coating thickness gage to a surface profile gage, dew point meter, soluble salt tester, hardness and ultrasonic thickness gage.



Bluetooth™ Printer

receives data from Advanced Models

Rechargeable Batteries

a set of eneloop NiMH AAA batteries

AC Power Kit

for continuous operation or battery charging — works in any country

Protective Lens Shield

protect the display from overspray

Additional K-type Sensors for use with PosiTector DPMS

Hand-held Surface Temperature Probe (PRBDPMHSP)

- for spot checking hard-to-reach surfaces

Liquid Temperature Probe (PRBDPMLTP)

- general purpose probe with stainless steel shaft

©DeFelsko Corporation USA 2018. All Rights Reserved. Technical Data subject to change without notice. • Printed in USA • PDPM.v.LW/W1803

DeFelsko
Inspection Instruments

DeFelsko Corporation • 800 Proctor Ave. • Ogdensburg, New York 13669-2205 USA
Toll Free 1-800-448-3835 • Tel: +1-315-393-4450 • Fax: +1-315-393-8471
techsale@defelsko.com • www.defelsko.com

Made in U.S.A.